



## ALTE Introductory Course in Language Testing

11<sup>th</sup> – 15<sup>th</sup> September 2017 – Leuven, Belgium



Practical information for course participants

## Travel Information

Travelling to Leuven is easy. There are direct plane connections between Brussels and most other capitals in Europe, and high-speed trains to all neighbouring countries. From Brussels you can reach Leuven in 15 to 30 minutes.

Do not confuse Leuven (*Louvain* in French) and Louvain-La-Neuve, since these are two different towns (cool story about how the former and the latter parted ways though).

### **By plane**

There are two main airports in Belgium: (1) Brussels Airport and (2) Brussels South Charleroi (mainly for low-cost carriers). We recommend arriving at Brussels Airport because it offers easier and faster connections to Leuven. A direct train connects Brussels Airport to Leuven in 15 minutes and costs €9.10. This train runs twice every hour.

Connections from Brussels South Charleroi Airport to Leuven involve an intricate combination of buses, trains and sheer luck. It will take you at least 90 minutes to Leuven.

### **By car**

Leuven can be reached easily by car. The E40 highway connecting Brussels and Liège runs through Leuven. The E314 highway links Leuven with the province of Limburg and from there on to Maastricht and Aachen, all in about one hour.

There are different car parks in Leuven to choose from.

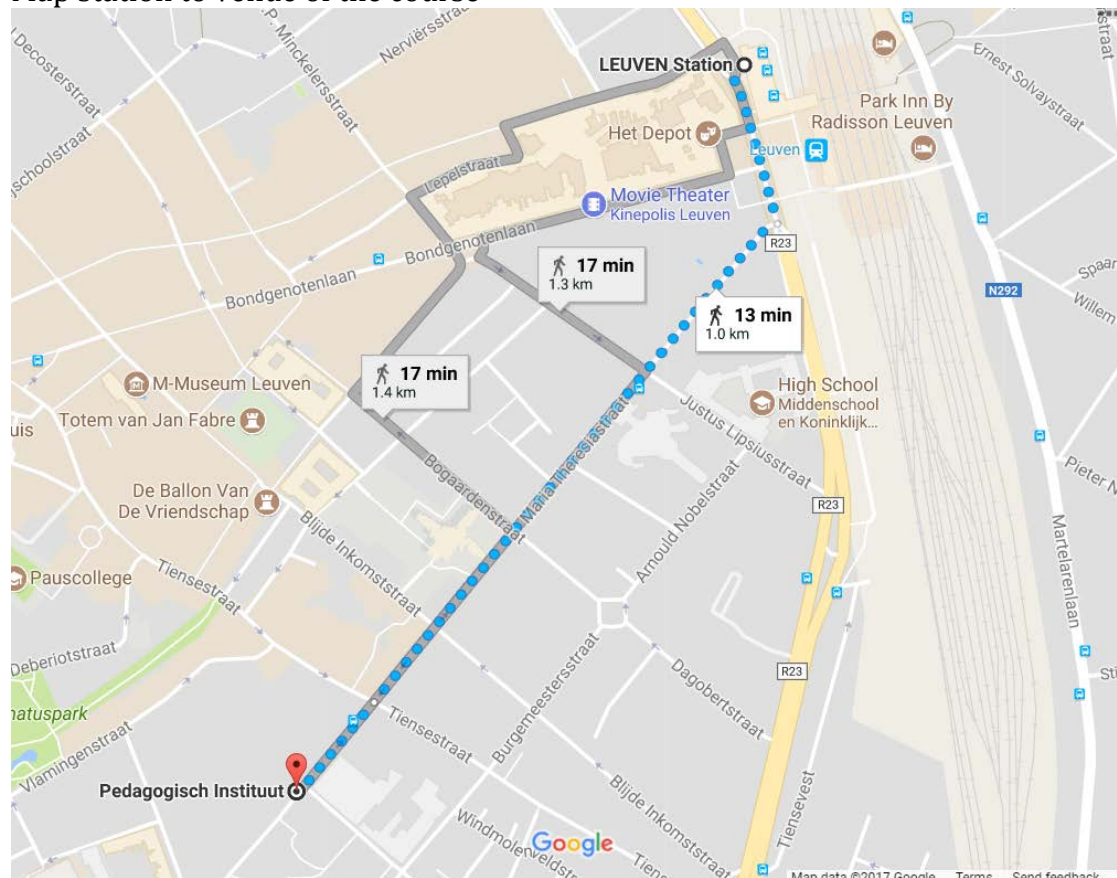
### **Out and about**

A cool thing about Belgium is that it's so easy to scoot back and forth across the country (it's tiny). From Leuven there are direct train connections to Brussels (cool place, if you know where to go), Bruges (quintessentially quaint. Pack up on your lace here), Antwerp (hipster alert), and Gent (which totally rocks).

## Maps & directions

**Address venue of the course:** [Pedagogisch Instituut \(PI\), Andreas Vesaliusstraat 2, 3000 Leuven](#)

Map station to venue of the course

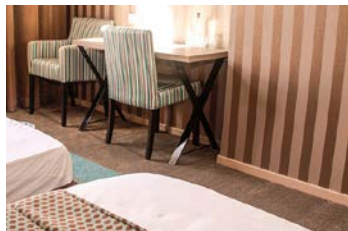


## Internet facilities

On the campus, conference attendants can use the internet facilities of KU Leuven. Eduroam is accessible to those with an account. Check here to see if your university is affiliated to eduroam: [www.eduroam.org](http://www.eduroam.org). External users can also log in on the 'campusroam-network through a temporary account. Ask for a personal account at the registration desk. This account can be used in all KU Leuven buildings with wireless contacts.

## Hotels

### Mille Colonnes\*



Martelarenplein 5

+32 (0)16 22 86 21 - [info@hotelmillecolonnes.be](mailto:info@hotelmillecolonnes.be)

Single rate: € 65,00

[Booking](#) reference: ALTE2017

Please note that these conditions and price are valid only with the booking reference till 40 days before the course takes place.

### Hotel Ibis budget\*



Martelarenlaan 10

+32 (0)16 47 98 80 - [H6682@accor.com](mailto:H6682@accor.com)

Single rate: € 82,35 / Single rate weekend: € 77,35

[Booking](#) reference: ALTE2017

Please note that these conditions and price are valid only with the booking reference till 1 month before the course takes place.

### IBIS Leuven Centrum\*\*



Brusselsestraat 52

+32 (0)16 29 31 11 - [H1457@accor.com](mailto:H1457@accor.com)

Single rate: € 113.95 / Single rate weekend: € 86.95

[Booking](#) reference: CENTRUM VOOR TAAL EN ONDERWIJS 983 035

Please note that these conditions and price are valid only with the booking reference till 2 months before the course takes place.

### **Binnenhof\*\*\***



Maria Theresiastraat 65

+32 (0)16 20 55 92 - [info@hotelbinnenhof.be](mailto:info@hotelbinnenhof.be)

Single rate: € 121 / Single rate weekend: € 96

[Booking](#) reference: G103678

Please note that these conditions and price are valid only with the booking reference till 2 months before the course takes place.

### **Park Inn by Radisson Leuven Hotel\*\*\***



Martelarenlaan 36

+32 (0)16 61 66 00 - [info.leuven@rezidorparkinn.com](mailto:info.leuven@rezidorparkinn.com)

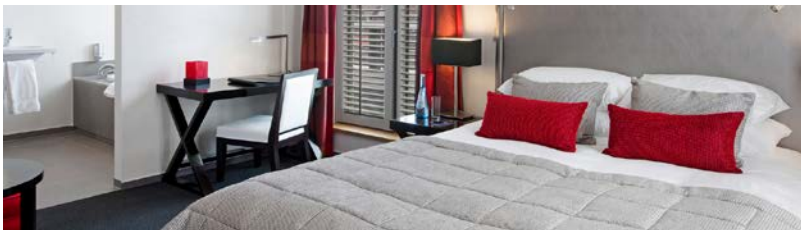
Single rate: € 145 / Single rate weekend: € 89

Double rate: € 155 / Double rate weekend: € 99

[Booking](#) reference: ALTE2017

Please note that these conditions and price are valid only with the booking reference and on availability.

### **Martin's Klooster\*\*\*\***



Onze-Lieve-Vrouwstraat 18

[klooster@martinshotels.com](mailto:klooster@martinshotels.com)

Single rate: € 169

[Booking](#) reference: KUL190917

Please note that these conditions and price are valid only with the booking reference till 50 days before the course takes place.

## Lunch

Please don't leave Leuven without having fries at a *frietkot*. Follow your nose, not your physician, and don't say no to some mayo!

Food that may not clot your arteries immediately is served here:

De Appel, Ravenstraat 15

Salads, sandwiches, pasta (and an occasional microwave *ping*)

1 minute from venue

Café Commerce, Herbert Hooverplein 16

Classic place for a lunchtime beer, but do not expect haute cuisine

2 minutes from venue

Bocata, Maria Theresiastraat 12

Lovely sandwiches. The big ones have their own zip code.

2 minutes from venue.

La Paz, Tiensestraat 73

Fresh soup & bread - a healthy option

3 minutes from venue

Coup de Soup, Vital De Costerstraat 2

Fresh soups & Bread – a healthy option

3 minutes from venue

Thai Snack House, Alfons Smetsplein

Cheap and tasty Thai curries

5 minutes from venue

Le Mustache, Tiensestraat 129

Bagels, salads, sandwiches & good coffee

7 minutes from venue

Lunch options abound around the Tiensestraat (in the part between Hooverplein and the Grote Markt). They are only 5 minutes from where all the events take place.

## Dinner

The place to be for dinner is the street called Muntstraat. You will find all kinds of cuisines in this cosy little street: Belgian, Mexican, Chinese, Italian...

Other options are:

Medina, Blijde Inkomststraat 31	Moroccan
Thai House, Tiensestraat 56	Thai
Masalatop, 's-Meiersstraat 3	Indian
O'Fado, Parijsstraat 49	Portuguese
De werf, Hogeschoolplein 5	Simple, mainly Flemish food
Lukemieke, Vlamingenstraat 55	Veggie & vegan
De wiering, Wieringstraat 2	Belgian cuisine

## Just a drink

### **Coffee & tea**

Anna Specialty Coffee & Tea, Leopold Vanderkelenstraat 27 Swartehond,  
Parijsstraat 48

Both are cosy places with good coffee

### **Belgian beer** (anywhere, really, but also here)

De Fiere Margriet, Margarethaplein 11

Lots of local beers, old school Flemish interior

Blauwe Kater – Hallengang 1

99 different kinds of beer in a wonderfully scruffy interior

The Capital, Grote Markt 14

2000 different Belgian beers. Yes. Two thousand!

Domus, Tiensestraat 8

Lots of beers from the home brewery, connected to the pub through a 'beer pipeline'.

### **Wine**

Convento Wines & Antiques, Mechelsestraat 87

### **Cocktails**

Vila Ernesto, Mechelsestraat 51

Tropical cocktails and Latin vibes

## ALTE Contact Details

ALTE Secretariat

1 Hills Road

Cambridge

CB1 2EU

URL: <http://www.alte.org/>

During office hours: Monday – Friday, 8.30am – 5pm

Email: [Secretariat@alte.org](mailto:Secretariat@alte.org)

Tel.: +44 (0) 1223 552828

If you are unable to attend the ALTE course, please contact the Secretariat as soon as possible.