

ALTE 50th Meeting & Conference Day

20th – 22nd September 2017 – CNaVT, Leuven,
Belgium



Practical information for delegates

Welcome to Leuven!

We are so happy to welcome you to Leuven - a small university city with great history, good food, and dozens of pubs within stumbling distance.

On the program we have dazzlingly interesting speakers, a thought-provoking topic, and a few exciting social events. This practical program can help you settle in a little in, but don't hesitate to send us an e-mail if you have a specific question.

Travel Information

Travelling to Leuven is easy. There are direct plane connections between Brussels and most other capitals in Europe, and high-speed trains to all neighbouring countries. From Brussels you can reach Leuven in 15 to 30 minutes.

Do not confuse Leuven (*Louvain* in French) and Louvain-La-Neuve, since these are two different towns (cool story about how the former and the latter parted ways though).

By plane

There are two main airports in Belgium: (1) Brussels Airport and (2) Brussels South Charleroi, which is mainly for low-cost carriers. We recommend arriving at Brussels Airport because it offers easier and faster connections to Leuven. A direct train connects Brussels Airport to Leuven in 15 minutes and costs €9.10. This train runs twice every hour.

Connections from Brussels South Charleroi Airport to Leuven involve an intricate combination of buses, trains and sheer luck. It will take you at least 90 minutes to Leuven.

By car

Leuven can be reached easily by car. The E40 highway connecting Brussels and Liège runs through Leuven. The E314 highway links Leuven with the province of Limburg and from there on to Maastricht and Aachen, all in about one hour.

There are different car parks in Leuven to choose from.

Out and about

A cool thing about Belgium is that it's so easy to scoot back and forth across the country (it's tiny). From Leuven there are direct train connections to Brussels (cool place, if you know where to go), Bruges (quintessentially quaint. Pack up on your lace here), Antwerp (hipster alert), and Gent (which totally rocks).

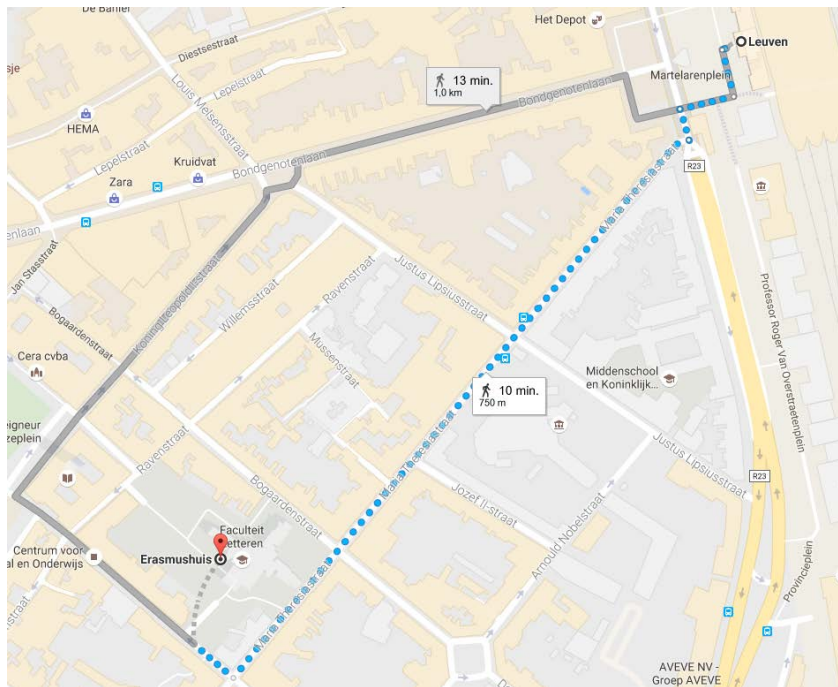
Maps & directions

Yes, we know smartphones exist.
Here are some screenshots.

Station to Erasmushuis, Faculty of Arts – Blijde Inkomststraat 21, Leuven

Take the Maria Theresiastraat. Walk for 10 minutes and make a right when you see trees.

The place to be for registration, coffee breaks & lunches on Thursday 21st September & Friday 22nd September.



Centre for Language and Education – Blijde Inkomststraat 7, Leuven

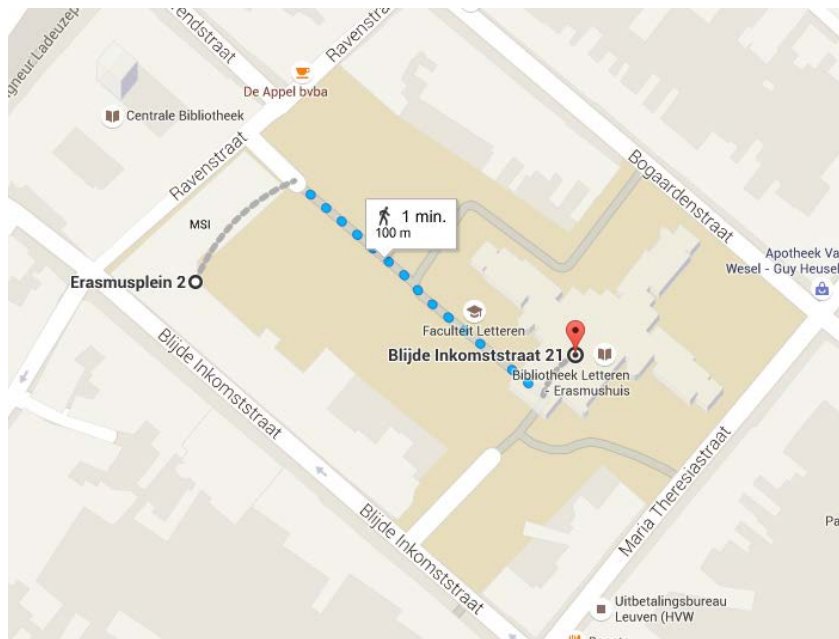
Our secretariat is here. Come by if you have an urgent question

Opening hours: 8.30 AM – 5 PM

MSI (Mgr. Sencie-instituut) Erasmusplein 2, Leuven

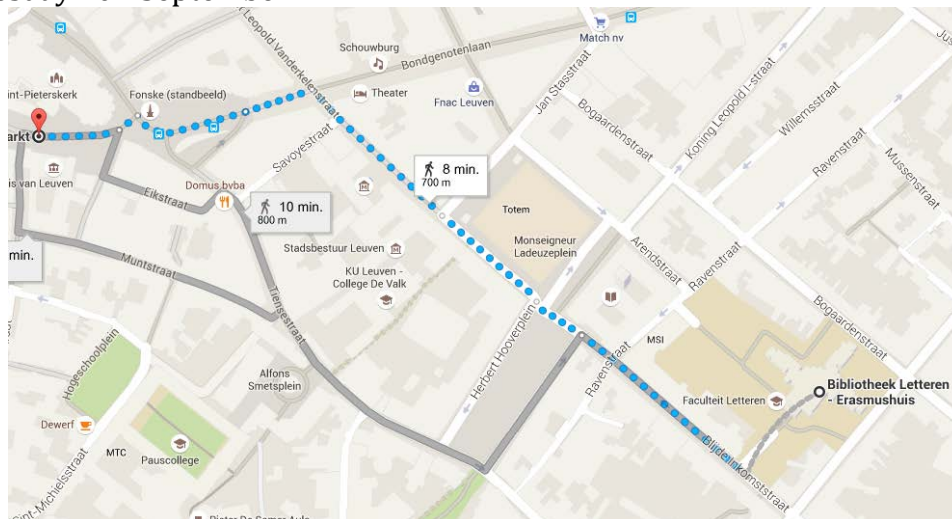
The place to be for the conference, the SIGs, and the workshops.

The place to be for registration, coffee breaks & lunch on Wednesday 20th September



Grote Markt, Leuven

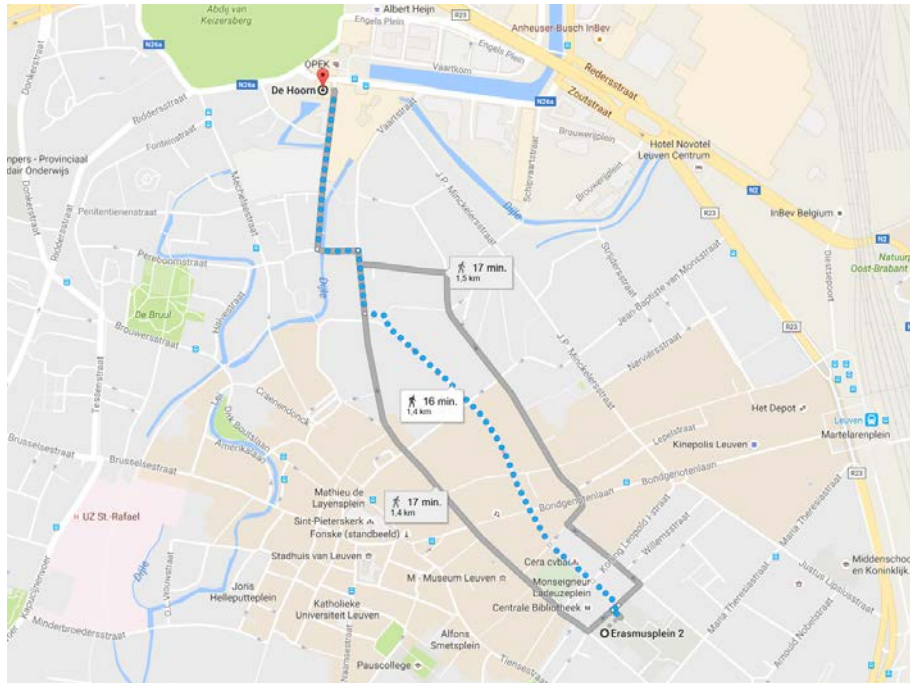
Guided city walk (at 6.15 PM) and beer benchmarking (at 7.15 PM) on Wednesday 20th September



De Hoorn – Sluisstraat 79 Leuven

Conference dinner, Thursday 21st September, 7.30PM

It's a bit of a hike to get there. There are buses too. At Leuven Railway Station you can take the 'Buitenringbus 600' at platform 11. Ask the driver to drop you off at the bus stop 'Leuven Vaartkom' (don't forget to ask, as the bus does not stop automatically at every bus stop), which is close to the Sluisstraat. It takes 5 minutes to get to this bus stop. The 'Buitenringbus 600' runs every 10 minutes.

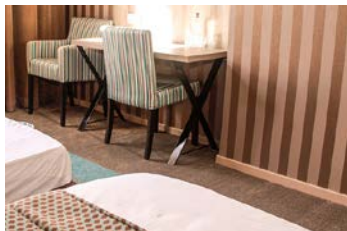


Internet facilities

On the campus, conference attendants can use the internet facilities of KU Leuven. Eduroam is accessible to those with an account. Check here to see if your university is affiliated to eduroam: www.eduroam.org. External users can also log in on the 'campusroam-network through a temporary account. Ask for a personal account at the registration desk. This account can be used in all KU Leuven buildings with wireless contacts.

Hotels

Mille Colonnes*



Martelarenplein 5

+32 (0)16 22 86 21 - info@hotelmillecolonnes.be

Single rate: € 65,00

[Booking](#) reference: ALTE2017

Please note that these conditions and price are valid only with the booking reference till 50 days before the conference takes place.

Hotel Ibis budget*



Martelarenlaan 10

+32 (0)16 47 98 80 - H6682@accor.com

Single rate: € 82,35 / Single rate weekend: € 77,35

[Booking](#) reference: ALTE2017

Please note that these conditions and price are valid only with the booking reference till 1 month before the conference takes place.

IBIS Leuven Centrum**



Brusselsestraat 52

+32 (0)16 29 31 11 - H1457@accor.com

Single rate: € 113.95 / Single rate weekend: € 86.95

[Booking](#) reference: CENTRUM VOOR TAAL EN ONDERWIJS 983 035

Please note that these conditions and price are valid only with the booking reference till 2 months before the conference takes place.

Binnenhof***



Maria Theresiastraat 65

+32 (0)16 20 55 92 - info@hotelbinnenhof.be

Single rate: € 121 / Single rate weekend: € 96

[Booking](#) reference: G103678

Please note that these conditions and price are valid only with the booking reference till 2 months before the conference takes place.

Park Inn by Radisson Leuven Hotel***



Martelarenlaan 36

+32 (0)16 61 66 00 - info.leuven@rezidorparkinn.com

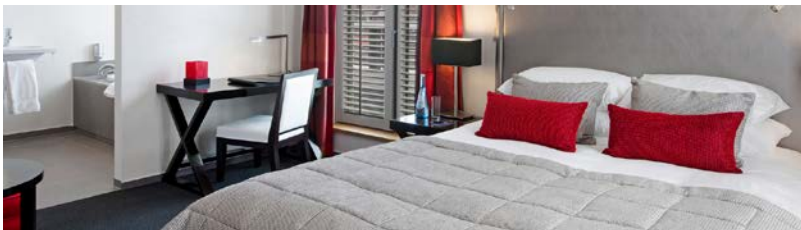
Single rate: € 145 / Single rate weekend: € 89

Double rate: € 155 / Double rate weekend: € 99

[Booking](#) reference: ALTE2017

Please note that these conditions and price are valid only with the booking reference and on availability.

Martin's Klooster****



Onze-Lieve-Vrouwstraat 18

klooster@martinshotels.com

Single rate: € 169

[Booking](#) reference: KUL190917

Please note that these conditions and price are valid only with the booking reference till 50 days before the conference takes place.

Lunch

Please don't leave Leuven without having fries at a *frietkot*. Follow your nose, not your physician, and don't say no to some mayo!

Food that may not clot your arteries immediately is served here:

De Appel, Ravenstraat 15

Salads, sandwiches, pasta (and an occasional microwave *ping*)

1 minute from venue

Café Commerce, Herbert Hooverplein 16

Classic place for a lunchtime beer, but do not expect haute cuisine

2 minutes from venue

Bocata, Maria Theresiastraat 12

Lovely sandwiches. The big ones have their own zip code.

2 minutes from venue.

La Paz, Tiensestraat 73

Fresh soup & bread - a healthy option

3 minutes from venue

Coup de Soup, Vital De Costerstraat 2

Fresh soups & Bread – a healthy option

3 minutes from venue

Thai Snack House, Alfons Smetsplein

Cheap and tasty Thai curries

5 minutes from venue

Le Mustache, Tiensestraat 129

Bagels, salads, sandwiches & good coffee

7 minutes from venue

Lunch options abound around the Tiensestraat (in the part between Hooverplein and the Grote Markt). They are only 5 minutes from where all the events take place.

Dinner

The place to be for dinner is the street called Muntstraat. You will find all kinds of cuisines in this cosy little street: Belgian, Mexican, Chinese, Italian...

Other options are:

Medina, Blijde Inkomststraat 31	Moroccan
Thai House, Tiensestraat 56	Thai
Masalatop, 's-Meiersstraat 3	Indian
O'Fado, Parijsstraat 49	Portuguese
De werf, Hogeschoolplein 5	Simple, mainly Flemish food
Lukemieke, Vlamingenstraat 55	Veggie & vegan
De wiering, Wieringstraat 2	Belgian cuisine

Just a drink

Coffee & tea

Anna Specialty Coffee & Tea, Leopold Vanderkelenstraat 27

Swartehond, Parijsstraat 48

Sara's, Bogaardenstraat 24

These are cosy places with good coffee, tea and cakes

Belgian beer (anywhere, really, but also here)

De Fiere Margriet, Margarethaplein 11

Lots of local beers, old school Flemish interior

Blauwe Kater – Hallengang 1

99 different kinds of beer in a wonderfully scruffy interior

The Capital, Grote Markt 14

2000 different Belgian beers. Yes. Two thousand!

Domus, Tiensestraat 8

Lots of beers from the home brewery, connected to the pub through a 'beer pipeline'.

Wine

Convento Wines & Antiques, Mechelsestraat 87

Cocktails

Vila Ernesto, Mechelsestraat 51

Tropical cocktails and Latin vibes

CNaVT Contacts Details

Get in touch with the Leuven team!

Travel & accommodation: christina.maes@kuleuven.be

Any other matters, including the conference program: bart.deygers@kuleuven.be

ALTE Contact Details

ALTE Secretariat

1 Hills Road

Cambridge

CB1 2EU

URL: <http://www.alte.org/>

During office hours: Monday – Friday, 8.30am – 5pm

Email: Secretariat@alte.org

Tel.: +44 (0) 1223 552828

If you are unable to attend the ALTE Conference and Meeting, please contact the Secretariat as soon as possible.